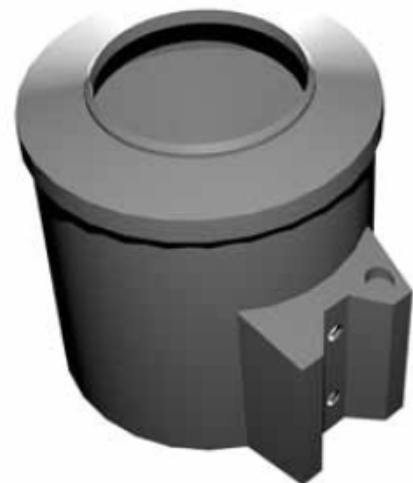
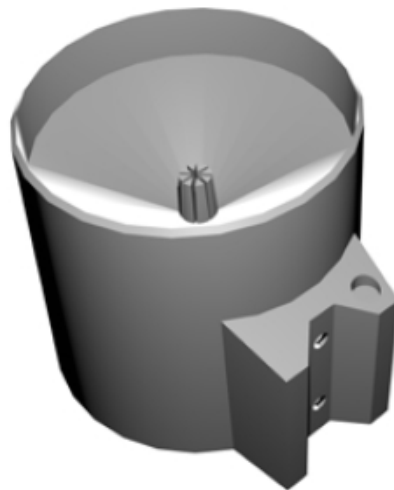


Rain Gauge

IM523

IM5231

LMP02

IM523
IM5231


The mechanic consists of a small magnet which moves past a metallic switch and open or closes the circuit. The double spoon tips left or right and does not lose any droplet of water due to a very fast switching mechanics. The resolution with a surface of 200 cm² is 0,2 mm. The resolution with the 80 cm² surface is 0,5 mm.

Sensor Type	Double tipping bucket rain gauge	
Output	Switch signal	
Switch	Reed contact, magnetically operated	
Sensitivity	1 tip per 0.2 mm	1 tip per 0.5 mm
Collector Surface	200 cm ²	80 cm ²
Dimensions	185 mm diameter x 250 mm H	
Evaluation	Digital	
Maximum Rain	12 mm/minute	40 mm/minute
Part.no. IM523	Rain gauge for iMetos 0.2 mm resolution	
Part.no. IM523PRO	Rain gauge for iMetos pro with 5 meter cable and holder	
Part.no. HRG01	Heating for rain gauge	